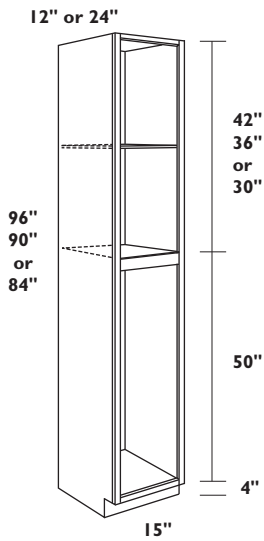


## UTILITY CABINETS, FRONTS & SHELVES

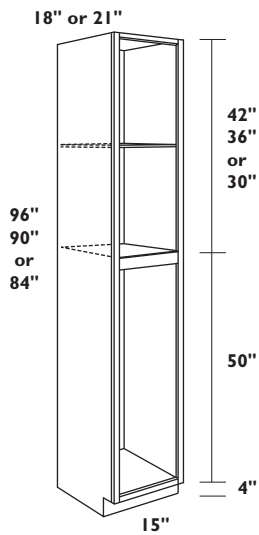
**NOTE FOR ALL 90" UTILITY CABINETS AND FRONTS:**  
Not available in Shasta.



### 96", 90" or 84" HIGH x 15" WIDE SINGLE DOOR UTILITY CABINETS (24" and 12" DEEP)

- 5/8" thick adjustable shelf, upper section of 96" tall cabinet has two 5/8" thick adjustable shelves
- Lower portion of utility cabinet shipped without shelves
- Order UCS\_ \_ \_ \_ shelves separately for lower section (see page 88)
- Opening height is 46-7/8" in lower section
- 3 hinges per door on lower section
- 3 hinges per door for upper section on 96" tall cabinets
- 2 hinges per door for upper section on 90" and 84" tall cabinets
- Specify L or R door hinging
- Toe kick shipped loose on 96" high cabinets
- Single door top and bottom

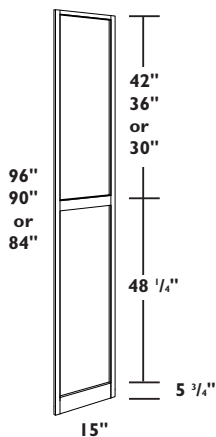
UC1512x96 L or R (12" depth)  
UC1524x96 L or R (24" depth)  
UC1512x90 L or R (12" depth)  
UC1524x90 L or R (24" depth)  
UC1512 L or R (12" depth)  
UC1524 L or R (24" depth)



### 96", 90" or 84" HIGH x 15" WIDE SINGLE DOOR UTILITY CABINETS (21" and 18" DEEP)

- 5/8" thick adjustable shelf, upper section of 96" tall cabinet has two 5/8" thick adjustable shelves
- Lower portion of utility cabinet shipped without shelves
- Order UCS\_ \_ \_ \_ shelves separately for lower section (see page 88)
- Opening height is 46-7/8" in lower section
- 3 hinges per door on lower section
- 3 hinges per door for upper section on 96" tall cabinets
- 2 hinges per door for upper section on 90" and 84" tall cabinets
- Specify L or R door hinging
- Toe kick shipped loose on 96" high cabinets
- Single door top and bottom

UC1518x96 L or R (18" depth)  
UC1521x96 L or R (21" depth)  
UC1518x90 L or R (18" depth)  
UC1521x90 L or R (21" depth)  
UC1518 L or R (18" depth)  
UC1521 L or R (21" depth)



### 96", 90" or 84" HIGH x 15" WIDE SINGLE DOOR UTILITY CABINET FRONT

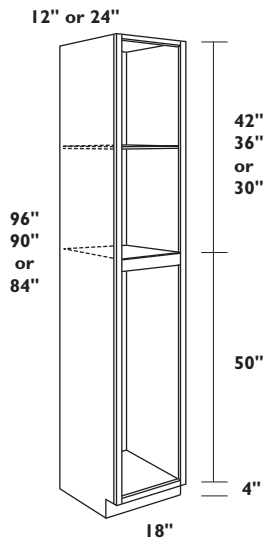
- 3 hinges per door on lower section
- 3 hinges per door for upper section on 96" tall cabinets
- 2 hinges per door for upper section on 90" and 84" tall cabinets
- Specify L or R door hinging
- Non-trimmable
- Single door top and bottom

UCF15x96 L or R  
UCF15x90 L or R  
UCF15 L or R

www.armstrong.com

# UTILITY CABINETS, FRONTS & SHELVES

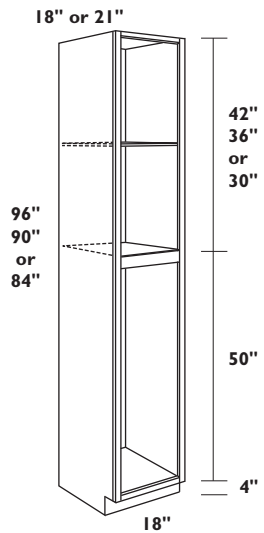
NOTE FOR ALL 90" UTILITY CABINETS AND FRONTS:  
Not available in Shasta.



## 96", 90" or 84" HIGH x 18" WIDE SINGLE DOOR UTILITY CABINETS (24" and 12" DEEP)

- 5/8" thick adjustable shelf, upper section of 96" tall cabinet has two 5/8" thick adjustable shelves
- Lower portion of utility cabinet shipped without shelves
- Order UCS\_ \_ \_ \_ shelves separately for lower section (see page 88)
- Opening height is 46-7/8" in lower section
- 3 hinges per door on lower section
- 3 hinges per door for upper section on 96" tall cabinets
- 2 hinges per door for upper section on 90" and 84" tall cabinets
- Specify L or R door hinging
- Toe kick shipped loose on 96" high cabinets
- Single door top and bottom

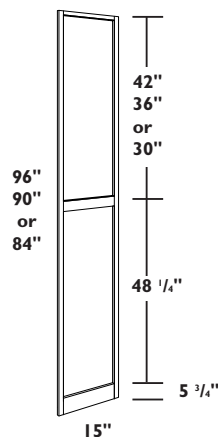
- UC1812x96 L or R (12" depth)
- UC1824x96 L or R (24" depth)
- UC1812x90 L or R (12" depth)
- UC1824x90 L or R (24" depth)
- UC1812 L or R (12" depth)
- UC1824 L or R (24" depth)



## 96", 90" or 84" HIGH x 18" WIDE SINGLE DOOR UTILITY CABINETS (21" and 18" DEEP)

- 5/8" thick adjustable shelf, upper section of 96" tall cabinet has two 5/8" thick adjustable shelves
- Lower portion of utility cabinet shipped without shelves
- Order UCS\_ \_ \_ \_ shelves separately for lower section (see page 88)
- Opening height is 46-7/8" in lower section
- 3 hinges per door on lower section
- 3 hinges per door for upper section on 96" tall cabinets
- 2 hinges per door for upper section on 90" and 84" tall cabinets
- Specify L or R door hinging
- Toe kick shipped loose on 96" high cabinets
- Single door top and bottom

- UC1818x96 L or R (18" depth)
- UC1821x96 L or R (21" depth)
- UC1818x90 L or R (18" depth)
- UC1821x90 L or R (21" depth)
- UC1818 L or R (18" depth)
- UC1821 L or R (21" depth)



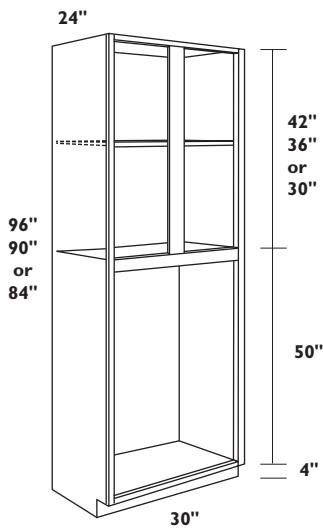
## 96", 90" or 84" HIGH x 18" WIDE SINGLE DOOR UTILITY CABINET FRONT

- 3 hinges per door on lower section
- 3 hinges per door for upper section on 96" tall cabinets
- 2 hinges per door for upper section on 90" and 84" tall cabinets
- Specify L or R door hinging
- Non-trimmable
- Single door top and bottom

- UCF18x96 L or R
- UCF18x90 L or R
- UCF18 L or R

## UTILITY CABINETS, FRONTS & SHELVES

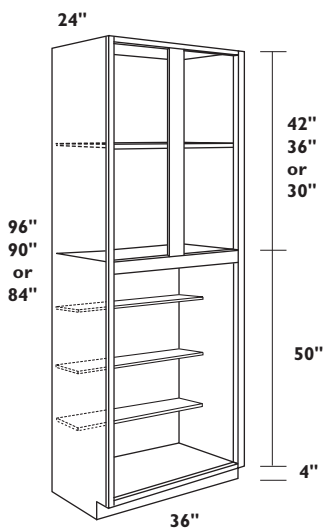
NOTE FOR ALL 90" UTILITY CABINETS AND FRONTS:  
Not available in Shasta.



### 96", 90" or 84" HIGH x 30" WIDE BUTT DOOR UTILITY CABINETS (24" DEEP)

- 5/8" thick adjustable shelf, upper section of 96" tall cabinet has two 5/8" thick adjustable shelves
- Order UCS3024 shelves separately for lower section (see page 88)
- Opening height is 46-7/8" in lower section
- 3 hinges per door on lower section
- 3 hinges per door for upper section on 96" tall cabinets
- 2 hinges per door for upper section on 90" and 84" tall cabinets
- Toe kick shipped loose on 96" high cabinets
- Butt door top and bottom

UC3024x96 (24" depth)  
UC3024x90 (24" depth)  
UC3024 (24" depth)



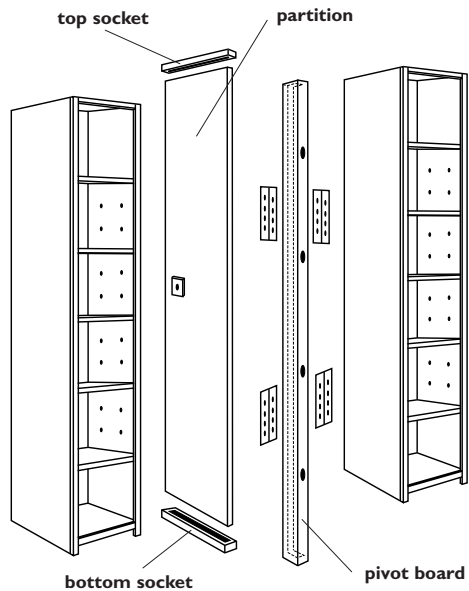
### 96", 90" or 84" HIGH x 36" WIDE BUTT DOOR UTILITY CABINETS (24" DEEP)

- 5/8" thick adjustable shelf, upper section of 96" tall cabinet has two 5/8" thick adjustable shelves
- Three 7" deep adjustable shelves shipped on inside lower portion back of cabinet
- Order UCS3624 shelves separately for lower section (see page 88)
- Opening height is 46-7/8" in lower section
- 3 hinges per door on lower section
- 3 hinges per door for upper section on 96" tall cabinets
- 2 hinges per door for upper section on 90" and 84" tall cabinets
- Toe kick shipped loose on 96" high cabinets
- Butt door top and bottom
- Not available in Bali, Branford, Caruth and Shasta door styles.

UC3624x96 (24" depth)  
UC3624x90 (24" depth)  
UC3624 (24" depth)

# UTILITY CABINETS, FRONTS & SHELVES

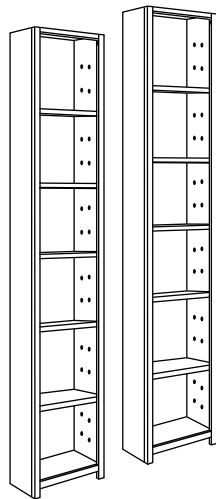
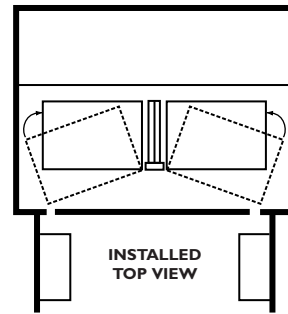
NOTE FOR ALL 90" UTILITY CABINETS AND FRONTS:  
Not available in Shasta.



## PANTRY CABINET SWING OUT SHELF KIT

- Set of two swing out shelves
- Three adjustable shelves and two fixed shelves for each swing out unit
- Designed to install inside of 36" wide x 24" deep x 96", 90" or 84" high utility cabinet shown on previous page
- Field installation required

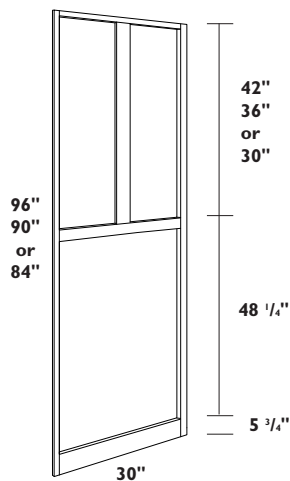
PCSK36



## PANTRY CABINET DOOR SHELVES

- Set of two
- Five adjustable shelves for each door shelf
- Designed to install on backside of 36" wide x 24" deep x 96", 90" or 84" high utility cabinet shown on previous page
- Field installation required
- PCDS36 door shelves not available for use with Caruth, Rutledge and Siena door styles

PCDS36



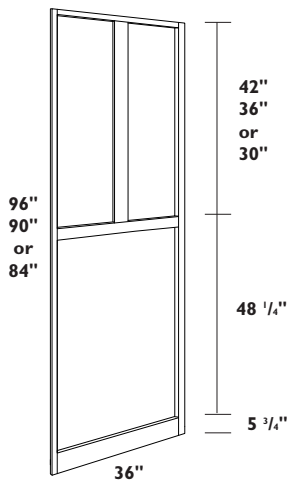
## 96", 90" or 84" HIGH x 30" WIDE BUTT DOOR UTILITY CABINET FRONT

- Non-trimmable
- 3 hinges per door on lower section
- 3 hinges per door for upper section on 96" tall cabinets
- 2 hinges per door for upper section on 90" and 84" tall cabinets
- Butt doors top and bottom

UCF30x96  
UCF30x90  
UCF30

## UTILITY CABINETS, FRONTS & SHELVES

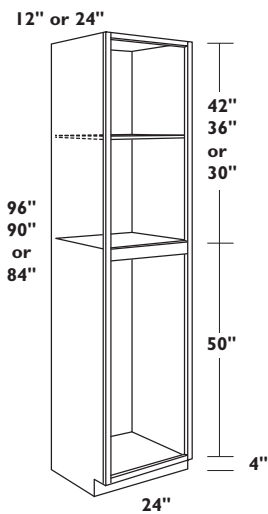
NOTE FOR ALL 90" UTILITY CABINETS AND FRONTS:  
Not available in Shasta.



### 96", 90" or 84" HIGH x 36" WIDE BUTT DOOR UTILITY CABINET FRONT

- Non-trimmable
- 3 hinges per door on lower section
- 3 hinges per door for upper section on 96" tall cabinets
- 2 hinges per door for upper section on 90" and 84" tall cabinets
- Butt doors top and bottom
- Not available in Caruth and Shasta door styles

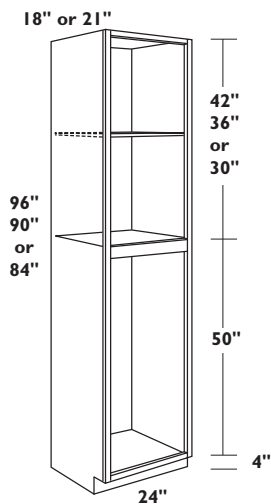
UCF36x96  
UCF36x90  
UCF36



### 96", 90" or 84" HIGH x 24" WIDE BUTT DOOR UTILITY CABINETS (24" and 12" DEEP)

- 5/8" thick adjustable shelf, upper section of 96" tall cabinet has two 5/8" thick adjustable shelves
- Lower portion of utility cabinet shipped without shelves
- Order UCS\_ \_ \_ \_ shelves separately for lower section (see page 88)
- Opening height is 46-7/8" in lower section
- 3 hinges per door on lower section
- 3 hinges per door for upper section on 96" tall cabinets
- 2 hinges per door for upper section on 90" and 84" tall cabinets
- Toe kick shipped loose on 96" high cabinets
- Butt door top and bottom

UC2412x96 (12" depth)  
UC2424x96 (24" depth)  
UC2412x90 (12" depth)  
UC2424x90 (24" depth)  
UC2412 (12" depth)  
UC2424 (24" depth)



### 96", 90" or 84" HIGH x 24" WIDE BUTT DOOR UTILITY CABINETS (21" and 18" DEEP)

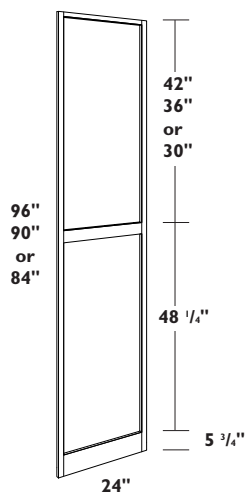
- 5/8" thick adjustable shelf, upper section of 96" tall cabinet has two 5/8" thick adjustable shelves
- Lower portion of utility cabinet shipped without shelves
- Order UCS\_ \_ \_ \_ shelves separately for lower section (see page 88)
- Opening height is 46-7/8" in lower section
- 3 hinges per door on lower section
- 3 hinges per door for upper section on 96" tall cabinets
- 2 hinges per door for upper section on 90" and 84" tall cabinets
- Toe kick shipped loose on 96" high cabinets
- Butt door top and bottom

UC2418x96 (18" depth)  
UC2421x96 (21" depth)  
UC2418x90 (18" depth)  
UC2421x90 (21" depth)  
UC2418 (18" depth)  
UC2421 (21" depth)

www.armstrong.com

## UTILITY CABINETS, FRONTS & SHELVES

NOTE FOR ALL 90" UTILITY CABINETS AND FRONTS:  
Not available in Shasta.

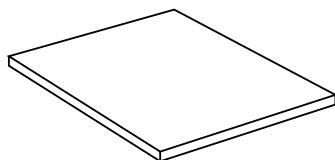


### 96", 90" or 84" HIGH x 24" WIDE BUTT DOOR UTILITY CABINET FRONT

- Non-trimmable
- 3 hinges per door on lower section
- 3 hinges per door for upper section on 96" tall cabinets
- 2 hinges per door for upper section on 90" and 84" tall cabinets
- Butt doors top and bottom

UCF24x96  
UCF24x90  
UCF24

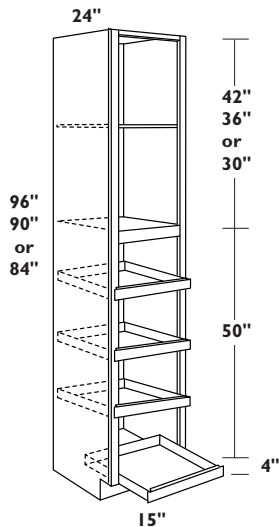
### UTILITY CABINET SHELVES



- 5/8" thick adjustable shelves for lower portion of utility cabinets
- Each shelf shipped with 4 shelf clips
- Laminate composite panel for Premier construction, or birch plywood for Allwood and Extreme construction

UCS1512 (13-5/16" wide x 10-7/8" deep)  
UCS1518 (13-5/16" wide x 16-7/8" deep)  
UCS1521 (13-5/16" wide x 19-7/8" deep)  
UCS1524 (13-5/16" wide x 22-7/8" deep)  
UCS1812 (16-5/16" wide x 10-7/8" deep)  
UCS1818 (16-5/16" wide x 16-7/8" deep)  
UCS1821 (16-5/16" wide x 19-7/8" deep)  
UCS1824 (16-5/16" wide x 22-7/8" deep)  
UCS2412 (22-5/16" wide x 10-7/8" deep)  
UCS2418 (22-5/16" wide x 16-7/8" deep)  
UCS2421 (22-5/16" wide x 19-7/8" deep)  
UCS2424 (22-5/16" wide x 22-7/8" deep)  
UCS3024 (28-5/16" wide x 22-7/8" deep)  
UCS3612 (34-5/16" wide x 10-7/8" deep)  
UCS3624 (34-5/16" wide x 22-7/8" deep)

## PANTRY CABINETS



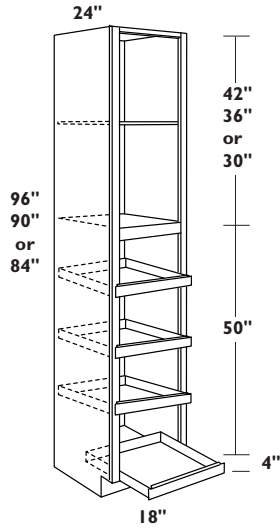
### 96", 90" or 84" HIGH x 15" WIDE SINGLE DOOR PANTRY CABINETS (24" DEEP)

- 5/8" thick adjustable shelf, upper section of 96" tall cabinet has two 5/8" thick adjustable shelves
- Lower portion of utility cabinet shipped with 4 pull out shelf trays.
- 3 hinges per door on lower section
- 3 hinges per door for upper section on 96" tall cabinets
- 2 hinges per door for upper section on 90" and 84" tall cabinets
- Specify L or R door hinging
- Toe kick shipped loose on 96" high cabinets
- Single door top and bottom

PCI524x96 L or R (24" depth)  
PCI524x90 L or R (24" depth)  
PCI524 L or R (24" depth)

## PANTRY CABINETS

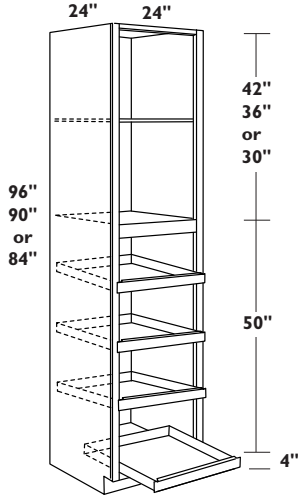
NOTE FOR ALL 90" PANTRY CABINETS AND FRONTS:  
Not available in Shasta.



### 96", 90" or 84" HIGH x 18" WIDE SINGLE DOOR PANTRY CABINETS (24" DEEP)

- 5/8" thick adjustable shelf, upper section of 96" tall cabinet has two 5/8" thick adjustable shelves
- Lower portion of utility cabinet shipped with 4 pull out shelf trays.
- 3 hinges per door on lower section
- 3 hinges per door for upper section on 96" tall cabinets
- 2 hinges per door for upper section on 90" and 84" tall cabinets
- Specify L or R door hinging
- Toe kick shipped loose on 96" high cabinets
- Single door top and bottom

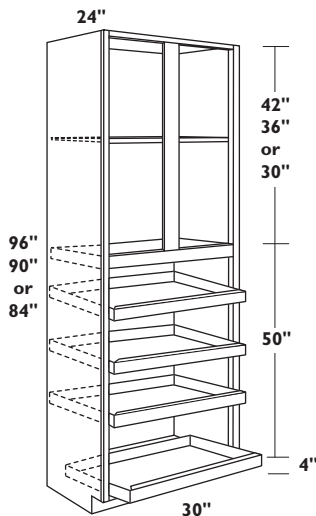
PC1824x96 L or R (24" depth)  
PC1824x90 L or R (24" depth)  
PC1824 L or R (24" depth)



### 96", 90" or 84" HIGH x 24" WIDE BUTT DOOR PANTRY CABINETS

- 5/8" thick adjustable shelf, upper section of 96" tall cabinet has two 5/8" thick adjustable shelves
- Lower portion of utility cabinet shipped with 4 pull out shelf trays.
- 3 hinges per door on lower section
- 3 hinges per door for upper section on 96" tall cabinets
- 2 hinges per door for upper section on 90" and 84" tall cabinets
- Toe kick shipped loose on 96" high cabinets
- Butt doors top and bottom

PC2424x96 (24" depth)  
PC2424x90 (24" depth)  
PC2424 (24" depth)



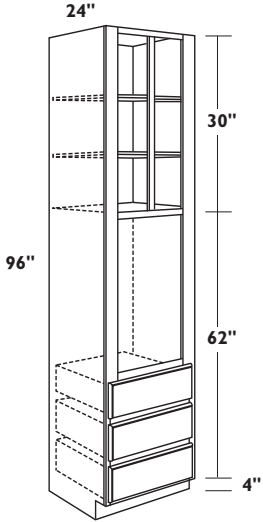
### 96", 90" or 84" HIGH x 30" WIDE BUTT DOOR PANTRY CABINETS (24" DEEP)

- 5/8" thick adjustable shelf, upper section of 96" tall cabinet has two 5/8" thick adjustable shelves
- Lower portion of utility cabinet shipped with 4 pull out shelf trays.
- 3 hinges per door on lower section
- 3 hinges per door for upper section on 96" tall cabinets
- 2 hinges per door for upper section on 90" and 84" tall cabinets
- Toe kick shipped loose on 96" high cabinets
- Butt doors top and bottom

PC3024x96 (24" depth)  
PC3024x90 (24" depth)  
PC3024 (24" depth)

www.armstrong.com

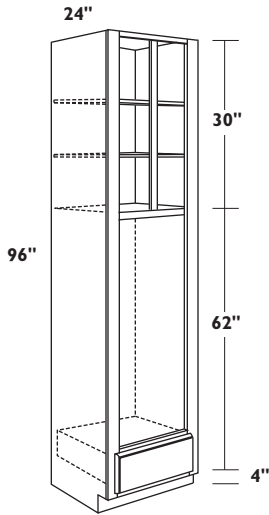
OVEN CABINETS



96" HIGH TRIPLE DRAWER OVEN CABINETS

- Three standard depth drawers on bottom
- Trimmable drawers for larger ovens
- Upper portion of cabinet has two 5/8" thick adjustable shelves
- Toe Kick shipped loose

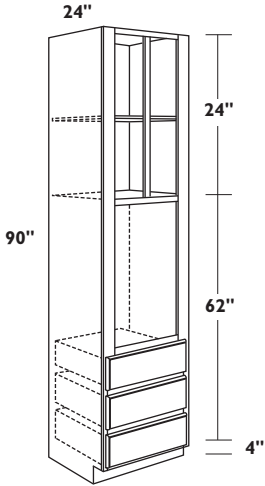
OV27Dx96  
 OV30Dx96  
 OV33Dx96



96" HIGH SINGLE DRAWER OVEN CABINETS

- One standard depth drawer on bottom
- Upper portion of cabinet has two 5/8" thick adjustable shelves
- Toe Kick shipped loose

OV27Sx96  
 OV30Sx96  
 OV33Sx96

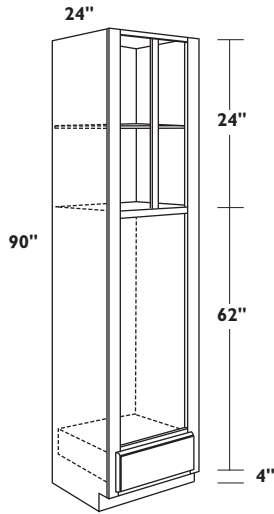


90" HIGH TRIPLE DRAWER OVEN CABINETS

- Three standard depth drawers on bottom
- Trimmable drawers for larger ovens
- Upper portion of cabinet has a 5/8" thick adjustable shelf

OV27Dx90  
 OV30Dx90  
 OV33Dx90

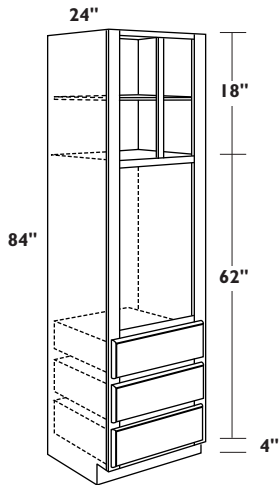
OVEN CABINETS



90" HIGH SINGLE DRAWER OVEN CABINETS

- One standard depth drawer on bottom
- Upper portion of cabinet has a 5/8" thick adjustable shelf

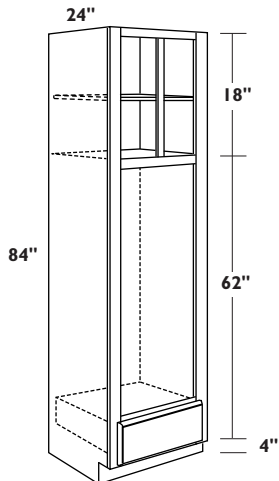
OV27Sx90  
OV30Sx90  
OV33Sx90



84" HIGH TRIPLE DRAWER OVEN CABINETS

- Three standard depth drawers on bottom
- Trimmable drawers for larger ovens
- Upper portion of cabinet has a 5/8" thick adjustable shelf

OV27D  
OV30D  
OV33D

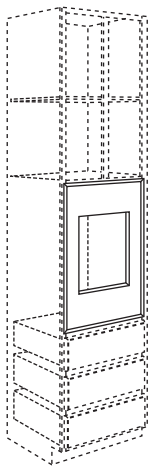


84" HIGH SINGLE DRAWER OVEN CABINETS

- One standard depth drawer on bottom
- Upper portion of cabinet has a 5/8" thick adjustable shelf

OV27S  
OV30S  
OV33S

# OVEN CABINETS



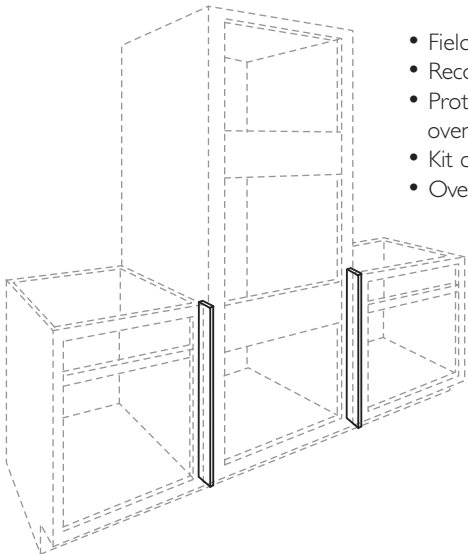
## OVEN CABINET OVERLAY

- Overlay shipped loose for field installation on Oven Cabinets and must be ordered separately
- For Full Overlay door styles only
- Quadric and Summit Hill overlay panels are solid
- Not available in Calibra. Order OUF filler overlays and miter together if oven overlay is desired.

OLAY27D  
OLAY30D  
OLAY33D

OLAY27S  
OLAY30S  
OLAY33S

## HEAT SHIELD KIT



HSK

- Field installation accessory
- Recommended for use as a heat shield for all white Thermofoil door styles
- Protects doors and drawer fronts from adjacent heat source (built in ovens, under counter ovens, drop-in or free-standing ranges)
- Kit contents: (2) white 1/16" thick x 1-9/16" x 30-1/2" metal heat shields
- Oven overlays must be used to prevent heat exposure to upper oven doors

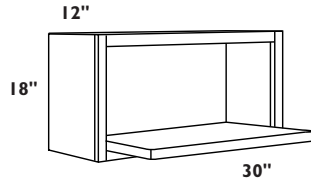
## OVEN CABINETS MINIMUM/MAXIMUM CUT-OUT SIZES

OVEN CABINET	MINIMUM HEIGHT*		MAXIMUM HEIGHT		MINIMUM WIDTH*		MAXIMUM WIDTH
	Stand. Reveal Styles	Full Overlay Styles	Stand. Reveal Styles	Full Overlay Styles	Stand. Reveal Styles	Full Overlay Styles	
96", 90" & 84" Heights							
OV27D	24"	19"	60"	36-3/4"	21"	20-3/4"	25"
OV30D	24"	19"	60"	36-3/4"	24"	23-3/4"	28"
OV33D	24"	19"	60"	36-3/4"	27"	26-3/4"	31"
OV27S	43-1/2"	34-1/4"	60"	52"	21"	20-3/4"	25"
OV30S	43-1/2"	34-1/4"	60"	52"	24"	23-3/4"	28"
OV33S	43-1/2"	34-1/4"	60"	52"	27"	26-3/4"	31"

\*NOTE: Quadric and Summit Hill oven overlay panels are solid, therefore no minimum width or height apply.

## MICROWAVE CABINETS

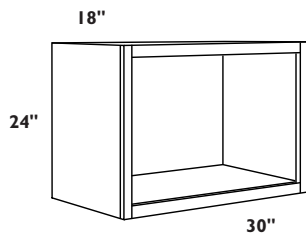
### 18" HIGH x 12" DEEP MICROWAVE CABINETS WITH SHELF



- Shelf is 18" deep x 3/4" thick
- Outside corners of shelf have a slight radius
- Shelves are Oak, Maple or Cherry veneer
- Microwave cabinets do not automatically come with finished interiors
- **FI** available in Allwood construction only with oak, maple or cherry plywood interiors
- 27" w x 14-1/2" h opening excluding 3/4" shelf

MCS3018x12 **FI**

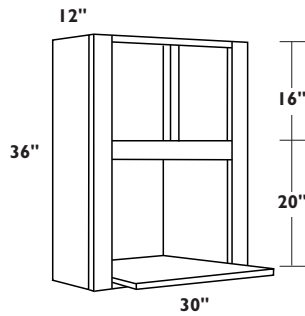
### 24" HIGH x 18" DEEP MICROWAVE CABINETS



- Microwave cabinets do not automatically come with finished interiors
- **FI** available in Allwood construction only with oak, maple or cherry plywood interiors
- 27" w x 20-1/2" h opening
- This cabinet must be installed between walls and/or adjacent cabinetry of equal depth

MC3024x18 **FI**

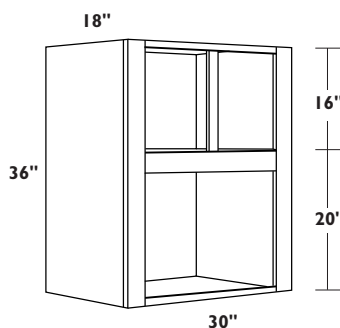
### 36" HIGH x 12" DEEP MICROWAVE CABINETS WITH SHELF



- Shelf is 18" deep x 3/4" thick
- Outside corners of shelf have a slight radius
- Shelf must be notched for field installation
- Shelves are Oak, Maple or Cherry veneer
- Microwave cabinets do not automatically come with finished interiors
- **FI** available in Allwood construction only with oak, maple or cherry plywood interiors
- Cabinet shipped with 23" w x 14-3/4" h opening excluding shelf
- Trimmable Max Cut Out: 28" w x 20" h
- Not trimmable in Laminate or Thermofoil door styles

MCS3036x12 **FI**

### 35" HIGH x 18" DEEP MICROWAVE CABINETS



- Microwave cabinets do not automatically come with finished interiors
- **FI** available in Allwood construction only with oak, maple or cherry plywood interiors
- Cabinet shipped with 23" w x 14-3/4" h opening
- Trimmable Max Cut Out: 28" w x 20" h
- This cabinet must be installed between walls and/or adjacent cabinetry of equal depth

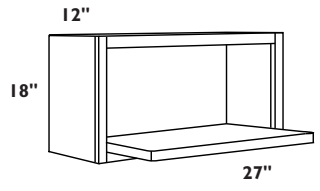
MC3036 **FI**

### OPTION KEY

- FI** Finished Interior: Matching Oak, Maple or Cherry veneer. Available in Allwood construction only.

[www.armstrong.com](http://www.armstrong.com)

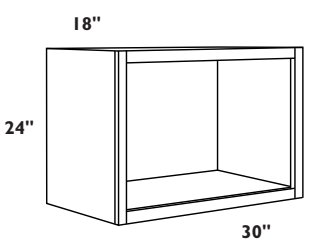
# MICROWAVE CABINETS



## 18" HIGH x 12" DEEP MICROWAVE CABINETS WITH SHELF

- Shelf is 18" deep x 3/4" thick
- Outside corners of shelf have a slight radius
- Shelves are Oak, Maple or Cherry veneer
- Microwave cabinets do not automatically come with finished interiors
- **FI** available in Allwood construction only with oak, maple or cherry plywood interiors
- 24" w x 14-1/2" h opening excluding 3/4" shelf

MCS2718x12 **FI**



## 18" HIGH x 18" DEEP MICROWAVE CABINETS

- Microwave cabinets do not automatically come with finished interiors
- **FI** available in Allwood construction only with oak, maple or cherry plywood interiors
- 24" w x 14-1/2" h opening
- This cabinet must be installed between walls and/or adjacent cabinetry of equal depth

MC2718x18 **FI**

### OPTION KEY

**FI** Finished Interior: Matching Oak, Maple or Cherry veneer. Available in Allwood construction only.